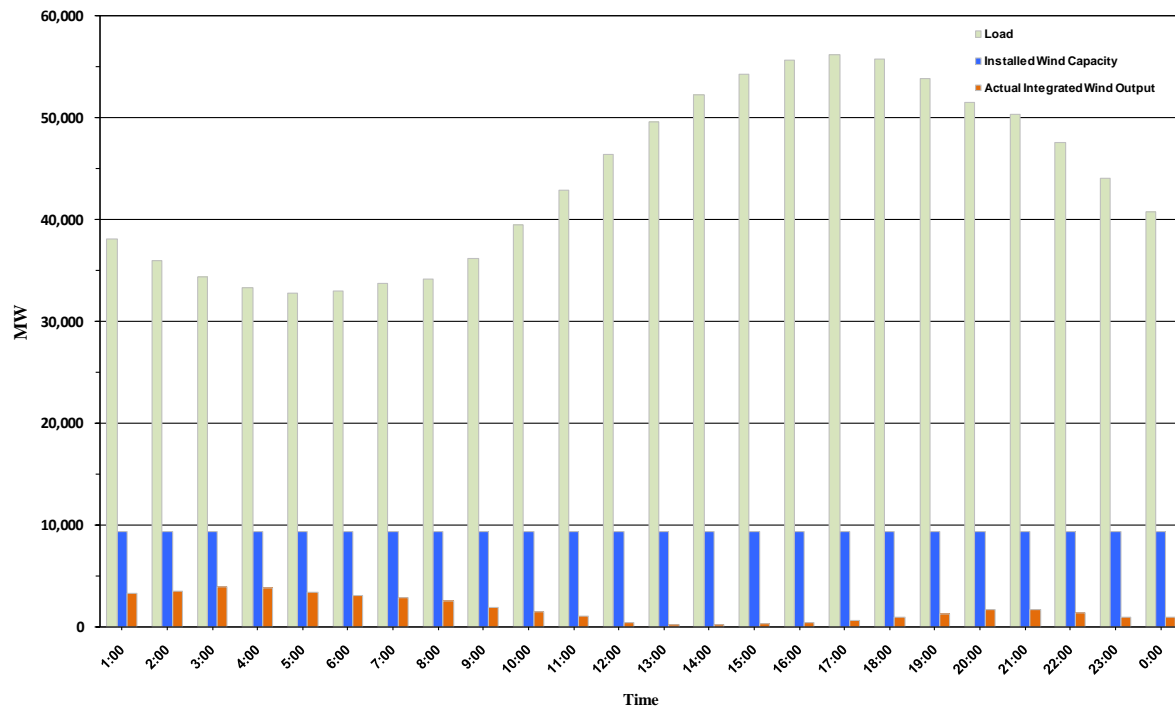




ERCOT Grid Operations Wind Penetration Report: 09/11/10

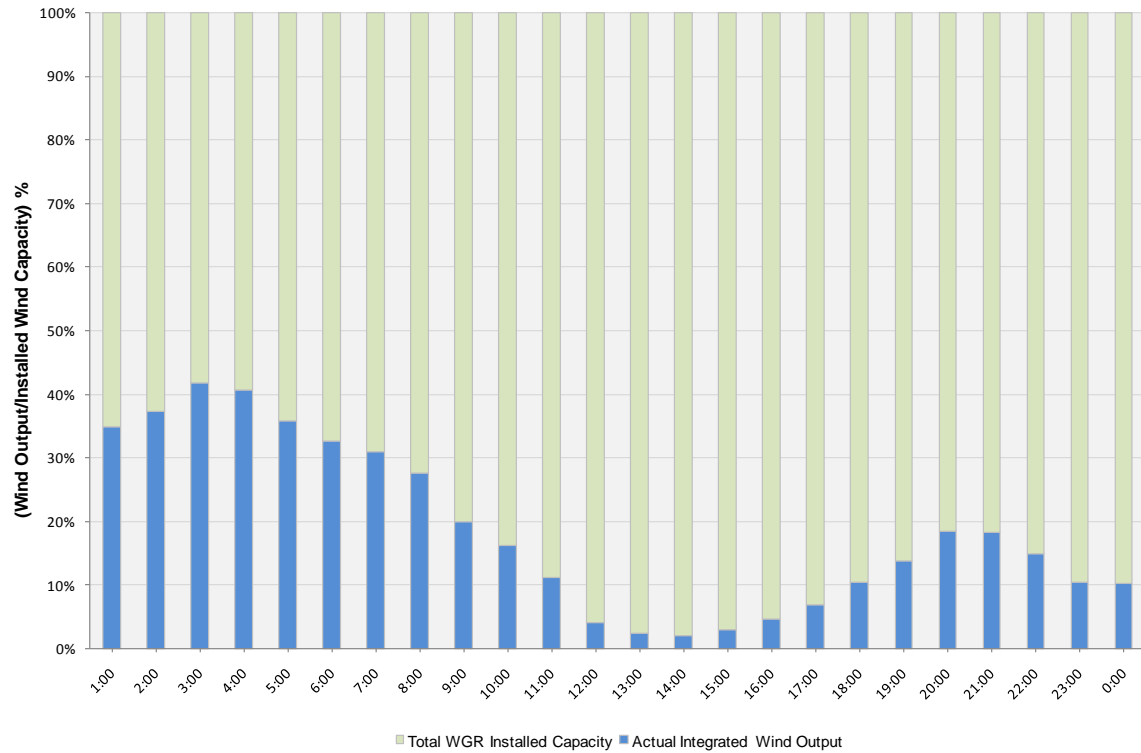
Peak Load	56,204 MW
Load Peak Hour	17
Wind Record 06/12/10	7016 MW
Max Wind value	4013 MW
Wind Peak Hour	03:01:40
Wind Penetration %	11.89

Hourly Average Actual Load vs. Actual Wind Output
09-11-2010

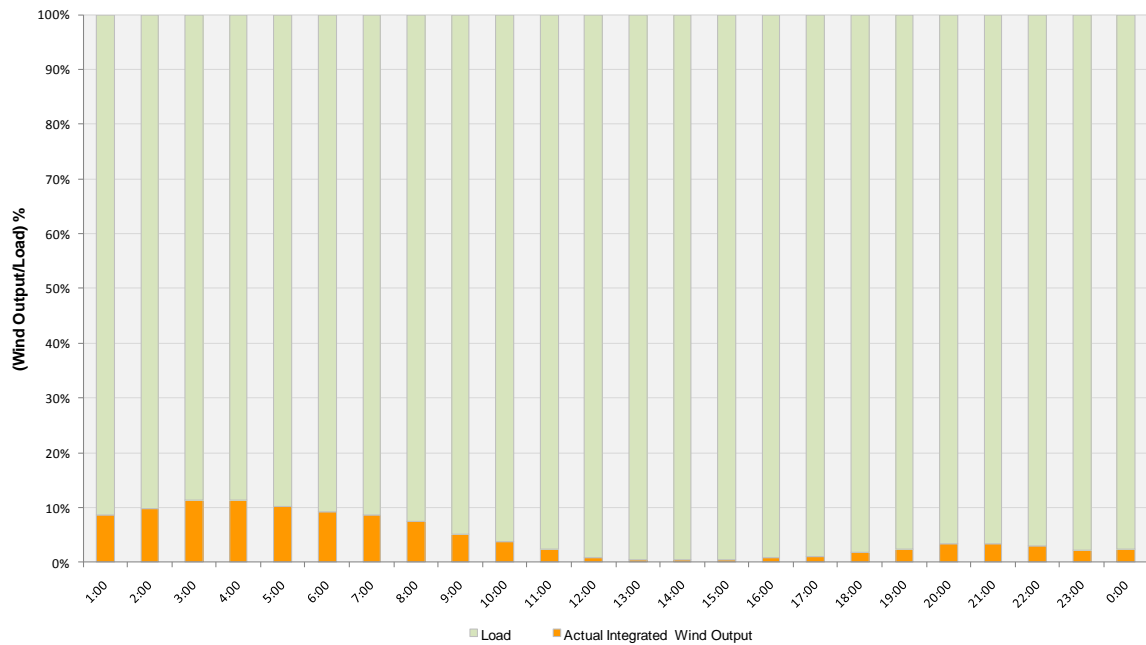




Actual Wind Output as a Percentage of the Total Installed Wind Capacity
09-11-2010



Actual Wind Output as a Percentage of the ERCOT Load
09-11-2010





ERCOT Load vs. Actual Wind Output 09/04/10 - 09/11/10

